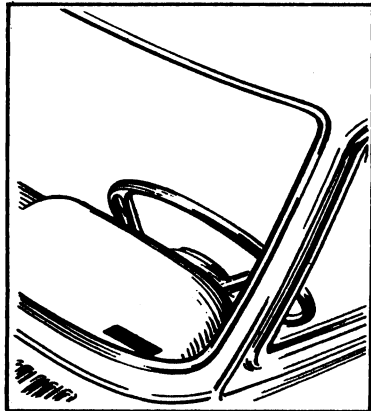


AMERICAN MOTORS

MODEL YEAR AND ENGINE IDENTIFICATION

IDENTIFICATION PLATE LOCATIONS:

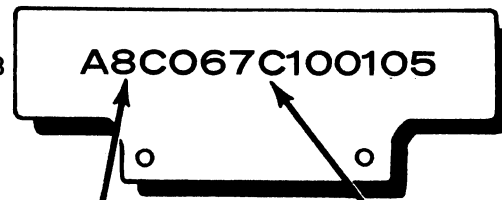
1969-78



1972 engines for California cars are painted red for identification of special equipment for Emission Control; all other engines are painted blue.

NOTE: Digit refers to Both Alphabetical and Numerical Characters.

1969-78



1 MODEL YEAR
(2nd digit)

2 ENGINE CODE
(7th digit)

The eighth digit designates plant location of manufacture. (1 thru 6 – Kenosha & 7 thru 9 – Canada).

3 ENGINE CODE										4 ENGINE				3 ENGINE CODE										4 ENGINE			
1978	1977	1976	1975	1974	1973	1972	1971	1970	1969	CYL.	C.I.D.	BBL.	HP.	1978	1977	1976	1975	1974	1973	1972	1971	1970	1969	CYL.	C.I.D.	BBL.	HP.
G	G							A	A	4	121	2V	—	H	H	H	H	H	H	H	H	H		V-8	304	2V	150, 210
										6	199	1V	128										S	V-8	343	2V	235
E	E	E	E	E	E	E	E	E	B				90, 100,										Z	V-8	343	4V	280
							G	C		6	232	2V	155	N	N	N	N	N	N	N	N	N		V-8	360	2V	175, 245
A	A	A	A	A	A	A	A			6	258	1V	110, 150			P	P	P†	P†	P†	P	P		V-8	360	4V	195, 290
C	C	C								6	258	2V	120									X	X	V-8	390	4V	315, 325
								M		V-8	290	2V	200									Y		V-8	390	4V	340
								N		V-8	290	4V	225			Z		Z	Z	Z	Z			V-8	401	4V	225, 330

†Dual Exhaust: 220 hp.