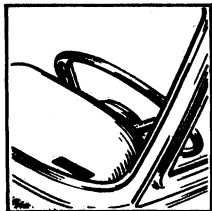


# CHEVROLET

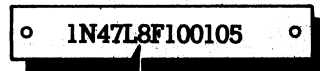
## IDENTIFICATION PLATE LOCATIONS:



1969-78, All Incl.  
Corvair

## MODEL YEAR IDENTIFICATION:

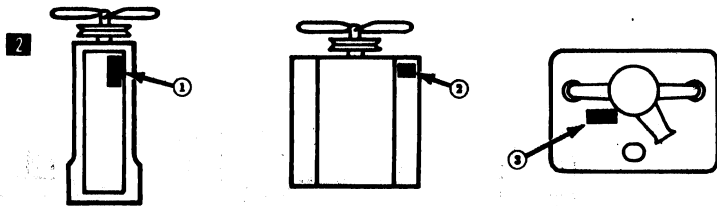
1969-78



1 MODEL YEAR  
(6th digit)

(1973-78 Fifth character is engine code)

## ENGINE CODE LOCATIONS:



① 4 and 6-cyl.—Right side of  
block to rear of distributor.

② V-8—Right front side of block.

③ Corvair—On engine block to  
left and rear of fuel pump.

# CHEVROLET Continued

3 ENGINE CODE										4 ENGINE				3 ENGINE CODE										4 ENGINE							
1976	1977	1976	1976	1974	1973	1972	1971	1970	1969	CYL.	O.L.D.	BBL.	HP.	1976	1977	1976	1976	1974	1973	1972	1971	1970	1969	CYL.	O.L.D.	BBL.	HP.				
I	I									4	85	1V	42	L	L	L	L	L						V-8	350	4V	155, 160				
E, J	E	E								4	98	1V	47, 63					J	J	J	J	CGK, CGS, CGL, CGT	CN	V-8	350	4V	165, 175, 195				
	O									4	122	FI	...																		
	A	A	A	A	A	B	CHC, CHA			4	140	1V	75, 78, 90									K	K	K, L	CGP, CGR, CGW, CGY, CGZ	CN	HA, HB, HE	V-8	350	4V	185, 190 (Chevelle, Camaro, Nova)
	B	B	B	B	B	B	CHD, CHB			4	140	2V	85, 87, 110																		
V										4	151	2V	85																		
								AA, AB		4	153	1V	90																		
								AC, AE		6	164	2/1V	95			X	X	T	T	T											
								AD, AF		6	164	2/1V	110																		
								AG, AH		6	164	4/1V	140																		
C										V-6	196	2V	86																		
M										V-6	200	2V	95																		
A										V-6	231	2V	103																		
								AM, AN, AO, AP, AQ, AR		6	230	1V	140 (Chevelle, Chevrolet)																		
								CCD	AM, AN, AO, AP, AQ, AR	6	230	1V	140 (Chevy II, Nova, Camaro)																		
D	D	D	D	D	D	D	CAA, CAB	CC, CR	BE, BF, BH	6	250	1V	100, 105, 110, 155 (Camaro)																		
	D	D	D	D	D	D	CAA, CAB	CC, CR	BB, BC, BD, BE, BF, BH	6	250	1V	100, 105, 155 (Chevelle)																		
D	D				D	D	CAA, CAB	CC, CR	BA, BB, BD	6	250	1V	100, 110, 155 (Chevrolet)																		
D	D	D	D	D	D	D	CAA, CAB	CC, CR	BE, BF, BH	6	250	1V	100, 105, 110, 155 (Chevy II, Nova)																		
	G	G								V-8	262	2V	110																		
								DZ		V-8	302	4V	290																		
U	U	Q								V-8	305	2V	145																		
					F	F	CCA, CCC	CN	DA, DC, DD, DE	V-8	307	2V	115, 200 (Chevelle, Chevy II, Nova)																		
H										V-8	350	4V	210																		
		H	H	H	H	H	CGA, CGB	CN	HQ, HR, HS	V-8	350	2V	145, 245, 255 (Chevelle, Camaro, Nova)																		
	V	H		H	H	H	CGA, CGB, CGC	CN	HT, HU, HV, IA	V-8	350	2V	145, 255 (Chevrolet)																		
										V-8	396	2V	265 (Chevrolet)																		
										V-8	396	4V	325 (Camaro)																		
										V-8	396	4V	325 (Chevelle)																		
										V-8	396	4V	350 (Camaro, Nova)																		
										V-8	396	4V	350 (Chevelle)																		
										V-8	396	4V	375																		
										V-8	400	2V, 4V	150, 175, 180			U	U	R, U	R	R, S, U	CLA, CLB, CLC, CLL, CLP, CLK, CLS	CG, CK, CR, CT, CZ	JD, JH, JL	V-8	400	2V, 4V	150, 175, 180				
										V-8	427	4V	335																		
										V-8	307	2V	200 (Chevrolet)						F	F	CCA, CCC	CN	DA, DC, DD, DE		V-8	307	2V	200 (Chevrolet)			
										V-8	327	2V	210																		
										V-8	327	2V	235 (Chevrolet)																		
										V-8	427	4V	390 (Chevrolet, Corvette)																		
										V-8	427	6V	400																		
										V-8	427	4V	425																		
										V-8	427	4V	430																		
										V-8	427	6V	435																		
										V-8	454	4V	275																		
										V-8	454	4V	215, 235, 245																		
										V-8	454	4V	425																		

FI — Fuel Injection